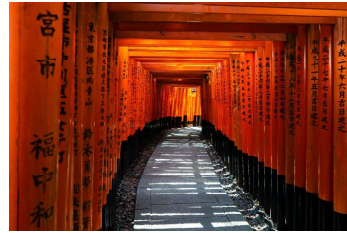
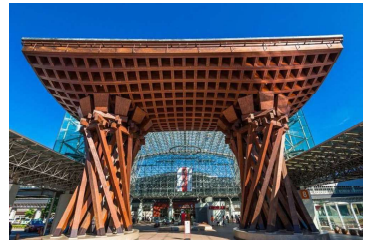


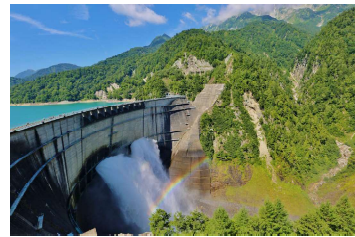
6 DAYS FAVORITE JAPAN ALPINE ROUTE AND SHIRAKAWAGO



Day 1 : Arrive to Kansai Airport around 6:30 → Move to Kyoto → Kinkakuji → Lunch → Fushimi Inari Taisha → Move to Gifu
→ Dinner at local restaurant → Gifu/Hotel check in (20:00) 🍽️ 🏠 🚅



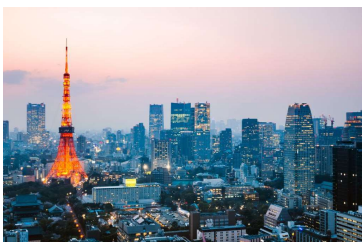
Day 2 : Hotel (08:00) → Hida Takayama → Lunch → Shirakawa-go → Move to Kanazawa/Toyama → Dinner →
Kanazawa/Toyama Hotel check in (20:00) 🍽️ 🏠 🚅



Day 3 : Hotel (08:00) → Tateyama Station → Alpine Route → Lunch → Ogisawa station → Move to Matsumoto → Dinner
→ Matsumoto/Hotel Check in (20:00) 🍽️ 🏠 🚅



Day 4 : Hotel (08:00) → Move to Kawaguchi-ko → Mt. Fuji 5th Station → Lunch → Oshino Hakkai → Gotemba Premium
Outlet → Dinner → Kawaguchi-ko/Hotel Check in (20:00) 🍽️ 🏠 🚅



Day 5 : Hotel (08:00) → Move to Tokyo → Tokyo Sky Tree/Tembodeck → Lunch → Asakusa Temple → Shopping in
Nakamise → Dinner → Narita/Hotel Check in (20:00) 🍽️ 🏠 🚅

Day 6 : Hotel (08:00) → Narita Airport by shuttlebus