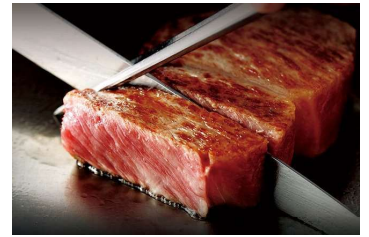
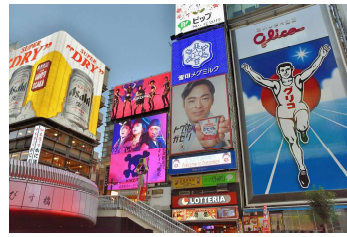
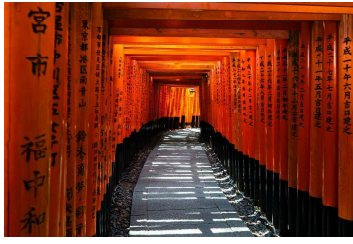


6 DAYS UNIVERSAL STUDIO JAPAN AND TOKYO DISNEYLAND



Day 1 : Arrive to Kansai Airport around 6:30 → Universal Studio Japan → Shopping in Shinsaibashi → Dinner at local restaurant → Osaka/Hotel check in (20:00) 🍽️ 🏠



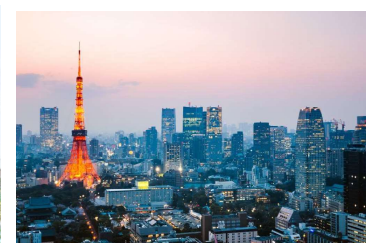
Day 2 : Hotel (08:00) → Move to Kyoto by Shinkansen → Bamboo Forest in Sagano → Kinkakuji → Lunch → Fushimi Inari Taisha → Move to Toyohashi → Dinner → Nagoya/Toyohashi Hotel check in (20:00) 🍽️ 🍽️ 🍽️ 🏠 🚅



Day 3 : Hotel (08:00) → Move to Kawaguchi-ko → Lunch → Gotemba Premium Outlet → Oshino Hakkai → Lunch → Chureito Pagoda → Dinner → Kawaguchi-ko/Hotel Check in (20:00) 🍽️ 🍽️ 🍽️ 🏠



Day 4 : Hotel (08:00) → Move to Tokyo → Ueno Park → Shinjuku Gyoen Garden → Lunch → Asakusa and Nakamise → Tokyo Sky Tree/Photo → Shopping in Ginza or Akihabara → Dinner → Tokyo/Hotel check in (20:00) 🍽️ 🍽️ 🍽️ 🏠



Day 5 : Hotel (08:00) → Tokyo Disneyland → Free Time → Dinner → Narita/Hotel Check In (20:00) 🍽️ 🍽️ 🍽️

Day 6 : Hotel (08:00) → Narita Airport by shuttlebus